

RMJSS Newsletter

ISSUE 2

FEBRUARY 2011

SPECIAL POINTS OF INTEREST:

- Sweetheart's Review
- Exhibitor Spotlights
- Jim Bridger FFA Steer & Heifer Show
- Mountain States Beef Expo

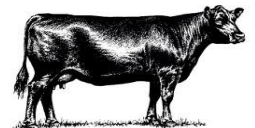
Sweethearts Livestock Extravaganza

This past weekend was the 1st Annual Sweethearts Livestock Extravaganza in St. George, Utah. Though it was a bit rainy everyone still had a really good time. This jackpot featured goats, lambs, and beef. With breeding, market and showmanship divisions in each species. This was an excellent show to start off 2011 with because there was two rings for exhibitors to show in and receive RMJSS points. The

two judges that were there were: Cody Sankey from Michigan State and Kyle Conley from Sulfur, Oklahoma. Both judges were really impressed with the quality of livestock that showed up and they did an excellent job sorting through them. Overall there were exhibitors that came from Idaho, Utah, Wyoming, and Nevada bringing in over 100 animals to show on Saturday. The Washington

County Fairgrounds proved to be an excellent location to host a show because there was ample space for everyone who was there. Marty Bundy of St. George was the host of this jackpot and I just want to take this time to say what a great job he did in organizing and putting on this show. I know that this show will now be a yearly family tradition for lots of people. And hopefully it only grows bigger!

Shandar Angus



We are selling 3 heifers private treaty:

1-April 2010 heifer

1-May 2010 heifer

1-July 2010 heifer (super gentle for 1st time exhibitor)

For more information please call Morgan Andrews 801-368-8314

Exhibitor Spotlight: Jessica Oelke



Jessica Oelke is 20 years old and from Plain City, Utah. She has been showing beef, sheep, dairy and swine throughout the Western U.S for 12 years now. When Jessica graduated from high school she received a scholarship to go to Casper College in Casper, Wyoming and be a member of their livestock judging team. She has since graduated from there with an Associates in Animal Science. Jessica had a great show at the Sweetheart's Livestock Extravaganza with her heifer who was Reserve Champion in ring 1 last weekend. When Jessica is not showing livestock she likes to dance, go 4-wheeling and enjoys skiing. Her favorite movie is Dear John and her favorite food is steak.



Exhibitor Spotlight: Morgan Perkins

Morgan is 11 years old and lives in Amalga, Utah. Through 4-H she has shown sheep, cattle, and horses for the past 3 years. One of her favorite things about showing cattle is the showmanship competition. Last year she worked hard and won Champion Junior Showman 5 times. So showmanship is very important to her. Morgan also enjoys being apart of the Junior Rodeo Circuit, Cache County 4-H Horse Program, and the Amalga youth council where she is a member. She is also involved in sporting events such as volleyball, soccer, basketball, and tennis. She loves fettuccini alfredo and cookie dough ice cream.



Exhibitor Spotlight: Phillip Peart

Phillip is currently 18 years old and a senior at Randolph High School. He has been showing beef, sheep and hogs now for ten years in the 4-H program. Phillips favorite thing to show is heifers and has been very successful winning champion heifer at numerous shows. He is also very busy with being the Student Body President at his high school, being an Allstate football player and also plays basketball. Phillips favorite food is french fries and chocolate ice cream while his favorite stock show to attend is Denver.

Exhibitor Spotlight: Annie Gibson

This is Annie Gibson's' first year showing and what a show season she has had so far! She purchased her steer to the right at the Fall Fiesta in November and turn around and won Champion prospect steer the next day. Then this last weekend at the Sweetheart's Livestock Extravaganza she won Grand Champion in both rings. So far Annie and her black and white steer are on a role! So congratulations on all your success. Another passion of hers is to sing and dance. She also likes watching High School Musical, listening to Disney music and eating spaghetti. Annie is from Ogden, Utah.



Exhibitor Spotlight: Jared Briggs

Jared is from the small town of Manila, Utah where he attends high school there. Jared has been showing beef for the last eight years and just loves it! He especially enjoys doing well showing his steers and heifers in addition to helping younger 4-H youth excel in the showing by sharing his knowledge and wisdom. Jared is a member of both 4-H and the Manila FFA Chapter. Living in Manila also allows him to show in both Wyoming and Utah fairs so he gets a lot of different experiences. Jared is also plays basketball and baseball, and loves eating pasta.

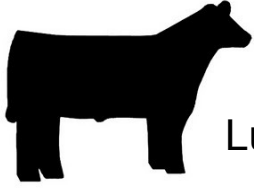


Exhibitor Spotlight: Madison Vitt

Madison is currently 14 years old and is from Fort Bridger, Wyoming. She has been showing beef for five years now through the 4-H organization. Her favorite accomplishments in showing steers and heifers and winning showmanship. Madison is the granddaughter of club calf producer Ernie Giorgis so she is able to help him on the farm and shows his steers. One of Madisons' favorite foods is pizza.



Jim Bridger FFA & Alumni Beef Jackpot Show



Saturday, March 19th - Mountain View, Wyoming

Lupher Arena – HWY 410 outside of Mountain View (directions below)

Open to all junior exhibitors Market Beef and Breeding Heifers

Rocky Mountain show series point show.

\$20 per entry Pre registered By March 16th

\$30 per entry after March 16th

\$5 Showmanship -

Jackpot Steers

Steers will be shown by weight

Jackpot Heifers:

Heifers will be shown by age

All breeds showing against each other. Only a Champion and Res. Champion overall will be selected

Showmanship Divisions:

-Pewee Division 8 and under & can handle their animal.

-Junior Division for ages 9-11

-Intermediate Division for ages 12-14

-Senior Division for ages 15-18

-Pay Out to class winners.

-Final Payout will be dependent on the added money gathered; amount of cattle entered and will be announced show day.

Schedule of Events

9-9:30 AM Open Registration

9:30 – 10:30 Fitting Demonstration – Provided by Smiths Fork Stockmen 4- H Club

9:30 AM – 10:30 AM Weigh In

11AM – Heifer classes

Market Classes to follow Heifer classes

Showmanship Classes to Follow Market



Miscellaneous Information:

Concessions available.

Bring own bedding (shavings only)

Overnight stalls available for pre registration.

Power is available bring generator if do not want to share power sources

Any Questions contact Cari Covolo 435-901-2265

Rocky Mountain jackpot rules will be followed

Directions to Luper Arena – From Mountain View Follow Hwy 410 approx. 4 miles south, turn right on to County Rd. 266. Cross cattle guard stay right at Y travel downhill to arena.

Rocky Mountain Jackpot Show Series (RMJSS) Steer & Heifer Rules and Regulations

General Steer & Heifer Rules:

1. Exhibitors must meet the Rocky Mountain Jackpot Show Series Age Rules.
2. There will be no maximum number of entries per exhibitor.
3. Each exhibitor/owner must assume all liability in case of death or injury to his/her animal and any injury or death incurred by his/her animal.
4. The RMJSS and JBFFA will not and cannot be held responsible for any injury or harm to person or animal.
5. All exhibitors will be responsible for their own tack and show supplies. The RMJSS and JBFFA are not responsible for any theft of property.
6. Entry Fee for the Steer & Heifer Jackpots will be determined by the individual jackpots
7. Each Exhibitor is responsible for his /her own bedding and feed. Only shavings are allowed.
8. All cattle must be well halter broke and fit for show. Unmanageable cattle will be dismissed.
9. No refunds of Entry Fees.
10. Appropriate show dress is required. No T-Shirts or Tennis Shoes allowed!
11. Heifer and steer classes will be determined by the jackpots Cattle Committee. Considerations for exhibitors with multiple animals in one class will be taken
12. For young or handicapped exhibitors special accommodations may be made for help inside the show ring.
13. Final Payout will be dependent on the added money gathered; amount of cattle entered and will be announced show day.
14. All Committee decisions are final!

Jackpot Steers

1. Steers will be shown by weight

Jackpot Heifers:

1. Heifers will be shown by age with all breeds showing against each other. No age division champions will be selected. Only a Champion and Res. Champion overall will be selected
2. A heifer may be shown in RMJSS heifer shows if it is not more than 2 years of age on the day of the show.
3. Heifers must be checked in at the jackpots designated weigh in time.
4. Heifers need not be registered to show.



10th
Annual

NEW LOCATION!
Fremont County
Fairgrounds



MOUNTAIN STATES

Beef Expo

**SUNDOWNER
STATION MOTEL**
1.800.874.1116

A block of rooms has been set up.
Mention the MSBE by April 15 for
reservations and get special rates!

General Rules

1. Entries are accepted the day of the show at weigh-in for \$30 per head, per day.
2. The show is open to anyone.
3. Steers will be shown by weight.
4. Heifers will be shown by breed. Classes will be finalized the day of the show.
5. Any unethical treatment of animals will result in immediate forfeiture of all premiums and entry fees. The exhibitor will be dismissed from the facilities.
6. The MSBE Board and any sponsors are not responsible for accidents.
7. Electricity is limited; generators are encouraged.
8. All classes will be shown at the Fremont County Fairgrounds on the South end of Riverton.
9. Jackpot showmanship entries are \$10 at the gate.

Please make your hotel reservations early!

New Fremont County Fairgrounds facility offers a wash rack, stalling, and more parking!

\$1,000 Grand Champion Steer
\$500 Reserve Champion Steer

\$500 Grand Champion Heifer
\$250 Reserve Champion Heifer

Saturday, April 30, 2011

- 8:00am - Weigh / Classify
- 11:00am - Heifer Show I
- 12:00pm - Jackpot Showmanship
- 1:30pm - Steer Show I

Sunday, May 1, 2011

- 7:00am - Weigh / Classify **New Entries**
- 9:30am - Heifer Show II
- 10:30am - Steer Show II

Riverton, Wyoming
APRIL 30 & MAY 1, 2011

Contact Information:

KENT HAUN **JERRY WELIEVER**
307.851.3207 307.851.8617

BRYAN WARNER
307.857.4240